

Tourism, Recreation and Sport

Transboundary Challenge

Transboundary Solution

Petra Šťastná (KRNAP)

Marek Dobrowolski (KPN)



Luční bouda chalet,
June 2011





Altitude

from 300 m (400 m in Poland) to 1602 m (Sněžka Mt.)



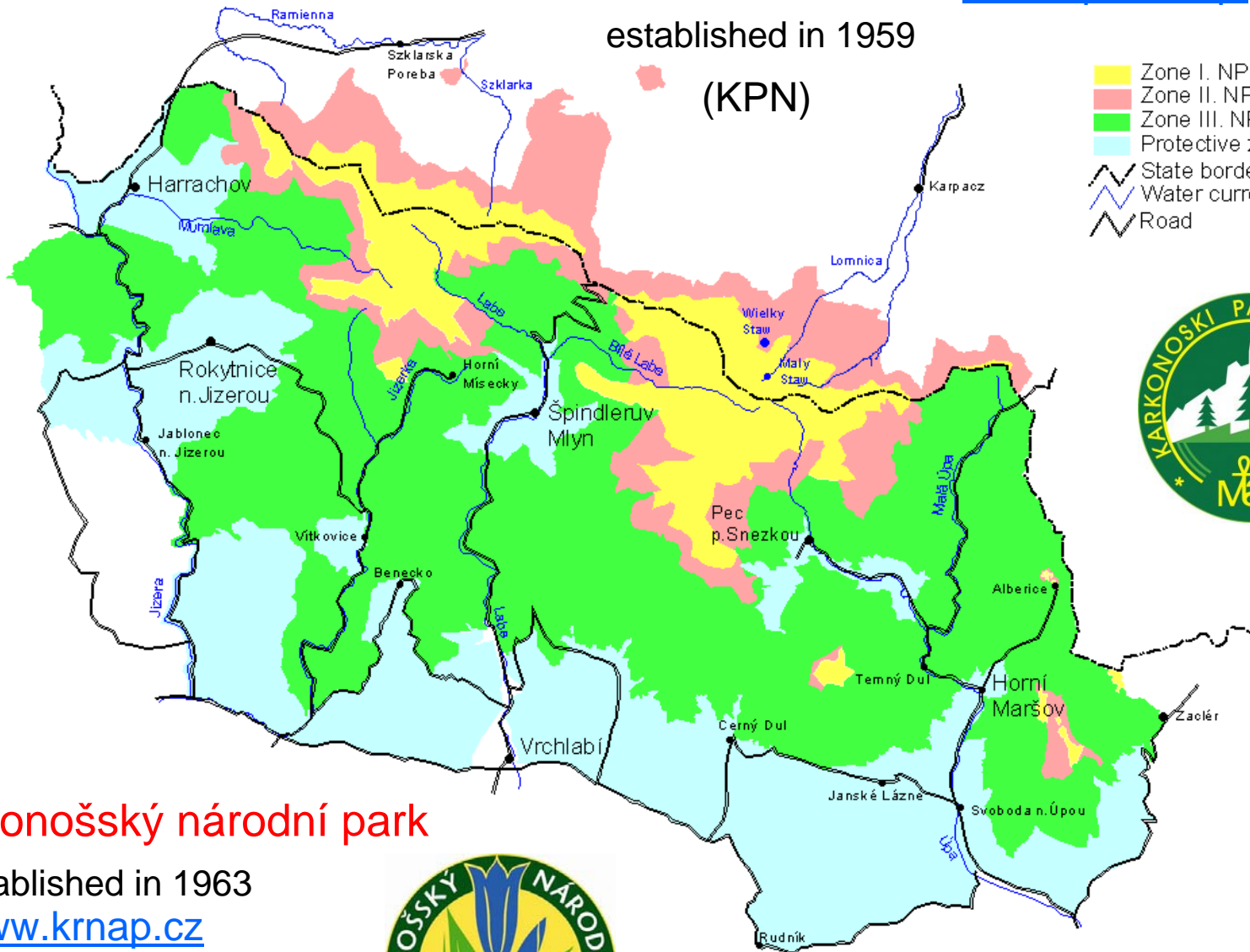
Karkonoski Park Narodowy

www.kpnmab.pl

established in 1959

(KPN)

- Zone I. NP
- Zone II. NP
- Zone III. NP
- Protective zone
- State border
- Water current
- Road



Krkonošský národní park

established in 1963

www.krnap.cz

(KRNP)





EUROPARC
F E D E R A T I O N

1990 – KRNAP

2010 – KPN



Transboundary Parks
E U R O P A R C

since 2004



Bilateral biosphere reserve

since 1992

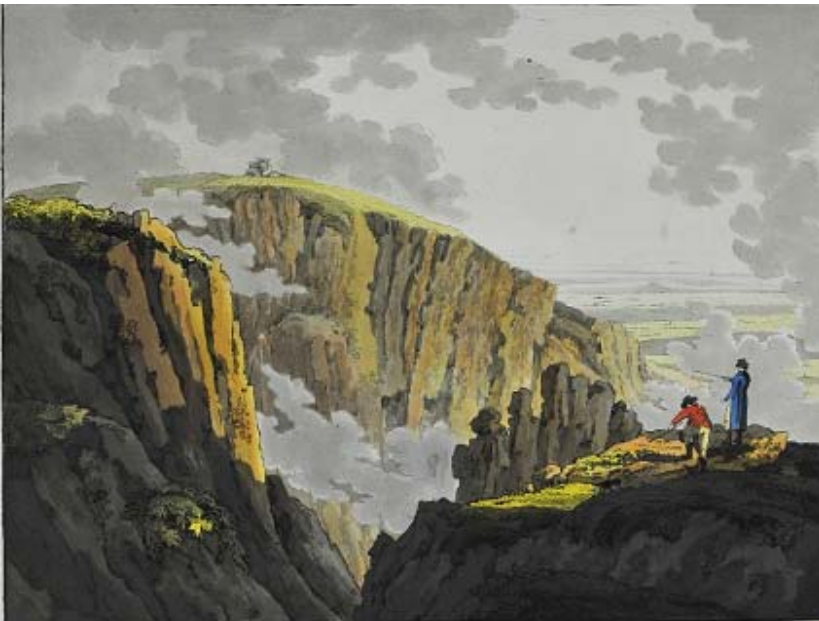
The differences between both Parks

		Czech side (with buffer zone)	Polish side Polish side
Responsibility for the safeness of the visitors: Inhabitants	Total area	54 787 ha (with buffer zone)	5 564 ha (buffer zone 11266 ha)
	Inhabitants	ca 26 700	ca 30 000 (in the vicinity of the Yes Park)
Entrance fee rail infrastructure	Visitors/year	5.4 millions	1 520 millions
	Entrance fee	800 km No	117.6 km. Yes
Requirement for guided groups of visitors	Bicycle trails	400 km	6 km
	Cable railways	20	4
	Ski lifts	430 No	10 Yes
	Ski slopes	150 km	16 km
	Accommodation	Total number of beds: ca 100 000	20 000 (approximately)

DIFFERENT LAW SYSTEMS

Tourism

- long history: frequent trips since the end of 18th century
- 19th century change of farming houses into tourist objects
- time of communist politic system (1945-1990)
- nowadays (since 1990)



TOURIST, SPORT, RECREATION ACITIVITIES

Hiking

PROBLEMS:

1. Need of constant maintaining of trails and tourist infrastructure in a good condition
2. Overcrowding of some places and routes
3. Influence on protected animals and vegetation
4. Problem of garbage



Bicycling

A photograph of three cyclists riding on a gravel trail in a forest. The cyclist in the foreground is a woman wearing a red jacket and a black helmet. The cyclist in the middle is a man wearing a light blue jacket and a white helmet. The cyclist in the background is a man wearing a blue jacket and a black helmet. The trail is made of gravel and is surrounded by green grass and trees.

PROBLEMS:

- 1. Need of constant maintaining of trails and tourist infrastructure in a good condition**
- 2. Additional movement on tourist trails in the summer**
- 3. Necessity of building additional infrastructure in the vicinity of the Park**
- 4. Walking tourist threat – conflict between cyclists and hikers**

WINTER ACITIVITIES



A red snow groomer is driving on a snowy trail through a forest of snow-covered trees. The groomer is moving away from the viewer, leaving tracks in the snow. The trees are heavily laden with snow, and the sky is clear and blue.

PROBLEMS:

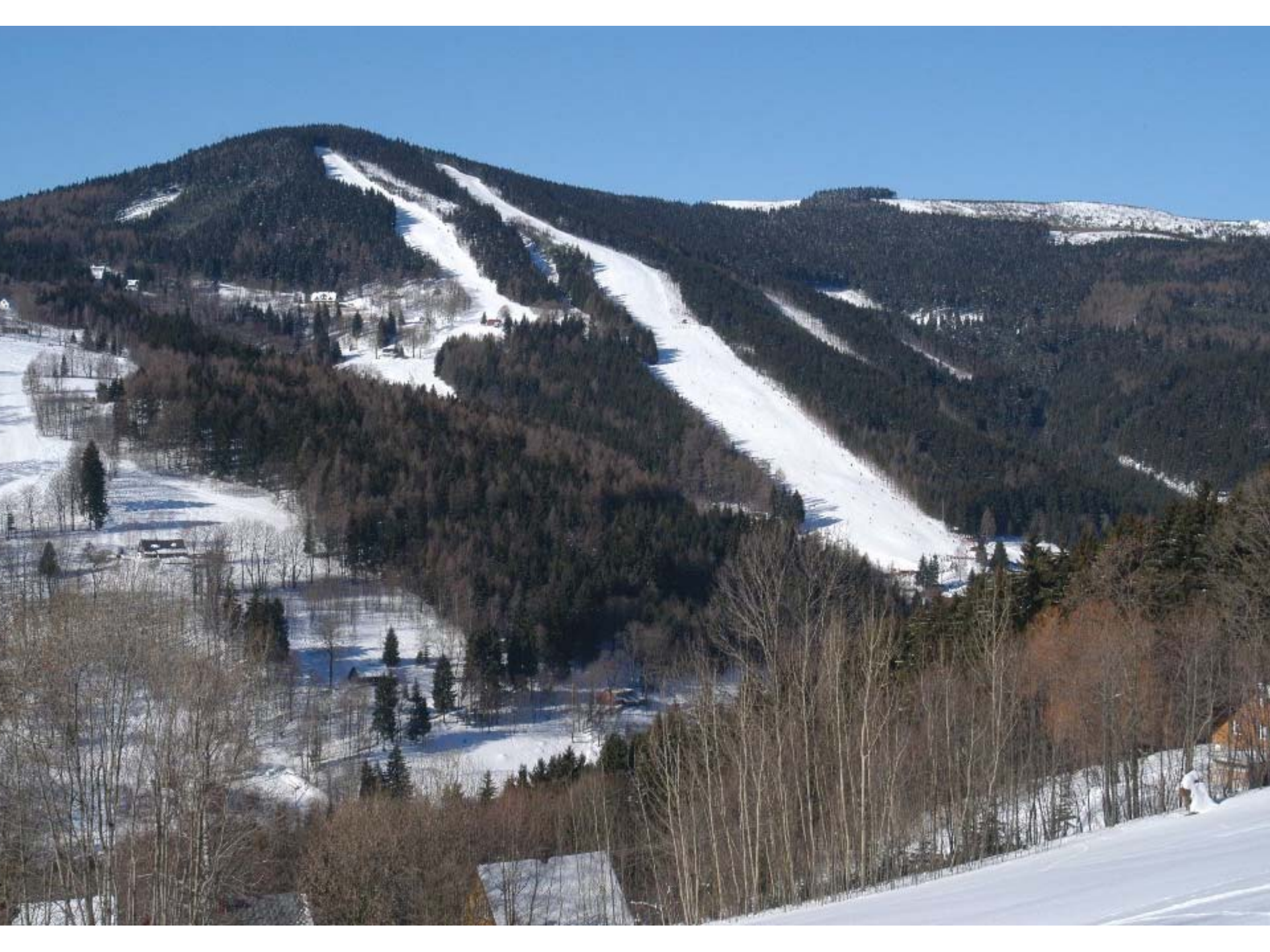
- 1. Need of constant maintaining of trails and infrastructure in a good condition**
- 2. Additional movement on tourist trails in the winter**
- 3. Sometime conflict between hikers and skiers**

Alpine skiing

PROBLEMS:

1. Need of constant maintaining of trails and lifts in a good condition, enhancing comfort for skiers
2. Changing of natural habitats to antropic
2. Erosion and biological danger due to artificial snow use
3. Additional trails on protected areas – changing of life conditions of many organisms and ecocystems
4. Very intensive changes in the landscape
5. Changes of light conditions in the night









Other sport activities



Problems:

Legal and illegal motorism





Demands for new parking places



**Demands for the new
„development“**

An aerial photograph of a mountain range under a clear blue sky. The mountains are covered in green vegetation. Several red lines are drawn across the slopes, indicating planned or existing ski runs. In the foreground, a valley contains a small village with buildings, roads, and green fields. The text "Demands for new alpine skiing slopes" is overlaid in large, bold, red letters with a white outline.

Demands for new alpine skiing slopes

A wide-angle photograph of a snowy landscape under a clear blue sky. In the center, a person is snowkiting, with a large, bright green and yellow kite flying in the air. The ground is covered in snow, and several other people can be seen in the distance, some standing and some sitting. A few small evergreen trees are scattered across the slope. The overall scene is bright and clear, suggesting a sunny day.

Demands for areas for new sport activities

Transborder cooperation - instruments

- Obtaining the actual information on the situation in both Parks
- Making collective decisions by solving problems during our meetings, visits or just by correspondence activity
- Sharing results of research and monitoring, practical experience exchange

Examples of good cooperation

- The management of infrastructure on the top of Sněžka Mt.
- Road to Karkonoska Pass (Špindlerovka)
- Maintenance of *Pinus mugo* shrubs near border trail

Actual projects

- the Krkonoše/Karkonosze Mts. in INSPIRE – GIS in protection of Nature
- Safe mountains – courses of first aid with mountain rescue elements
- Learning language of the neighboring countries



EVROPSKÁ UNIE / UNIA EUROPEJSKA
EVROPSKÝ FOND PRO REGIONÁLNÍ ROZVOJ / EUROPEJSKI FUNDUSZ ROZWOJU REGIONALNEGO
PŘEKRAČUJEME HRANICE / PRZEKRACZAMY GRANICE



United Nations Environment Programme
GRID Warszawa
Global Resource Information Database



Aims of our cooperation

On both sides of mountains are:

- **Unifying of evaluation criteria in the process of solving problems**
- **Making similar decisions**
- **Avoiding decisions resulting in negative influence on partner**





**Thank you for your
attention**