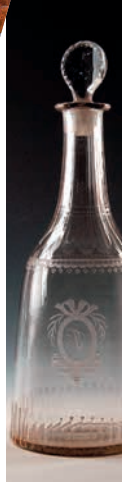


Museum of the Krkonoše Mountains Visitor Centre Vrchlabí



Museum of the Krkonoše Mountains
Published by the Administration of the Krkonoše
Mountains National Park in 2023
Text: © Michal Skalka
© 2023, the Administration of the Krkonoše
Mountains National Park
Dobrovského 3, 543 01 Vrchlabí
Not for sale.

www.muzeumkrkonos.cz

Ministerstvo životního prostředí



STÁTNÍ FOND
ŽIVOTNÍHO PROSTŘEDÍ
ČESKÉ REPUBLIKY

Tento projekt je spolufinancován
Státním fondem životního prostředí ČR
na základě rozhodnutí ministra životního prostředí.
www.mzp.cz www.sfpz.cz

WHY VISIT IT?

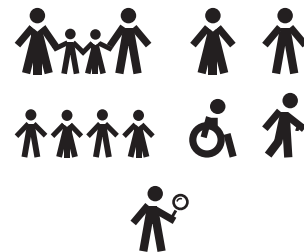
- 1** The largest exposition about the Krkonoše Mountains in the world
- 2** The Krkonoše Mountains from the formation of the first rocks to the present
- 3** Aquaria with live fish
- 4** Historical mine galleries
- 5** Modern exposition in the Baroque monastery
- 6** The biggest environmental disasters of the Krkonoše Mountains
- 7** The Krkonoše Mountains influenced by people and people influenced by the Mountains
- 8** DNA helix-shaped staircase



**Muzeum
Krkonoš**

GET TO KNOW THE
Krkonoše Mountains
IN ONE PLACE!

WHO FOR?



PROGRAMMES AND GUIDING SERVICES



MANDATORY booking

HOW LONG FOR?

1-2
hour days

(ticket valid for 48 hours)



Husova 213
Vrchlabí

OPENING HOURS

9 am - 5 pm

daily except Mondays
last admission at 4 pm



Parkoviště
Dobrovského
(cars only)

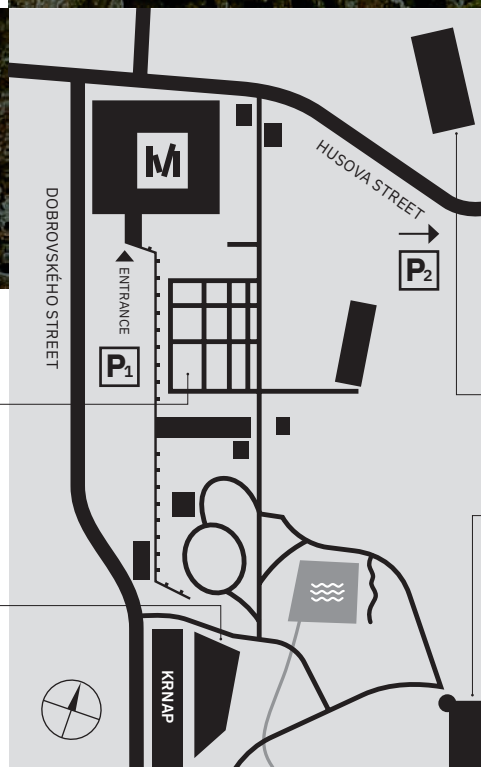


Cultural centre
Střelnice
(cars and BUSES)

WHAT IS AROUND?

Monastery garden with flower beds in the form of a grid, orchard of regional varieties fruit trees, exhibition of Rocks of the Krkonoše Mountains

KCEV (Environmental Education Centre of the Krkonoše Mountains) Krtek with unique architecture and programmes for the general public (MANDATORY booking)



ADMISSION

Basic CZK 200
Discounted CZK 100
Family CZK 400

WHAT IS AROUND?

Exhibition in four historic houses

Palace with entrance hall accessible to the public with paintings of bears hunted down in the Krkonoše Mountains and Palace Park